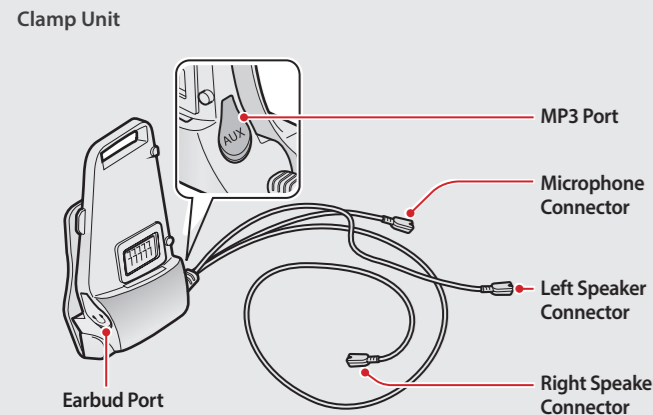
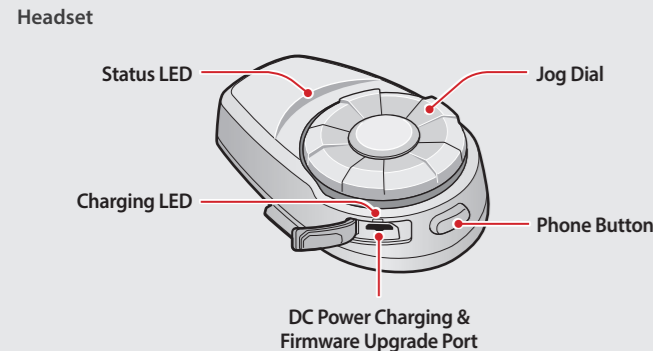
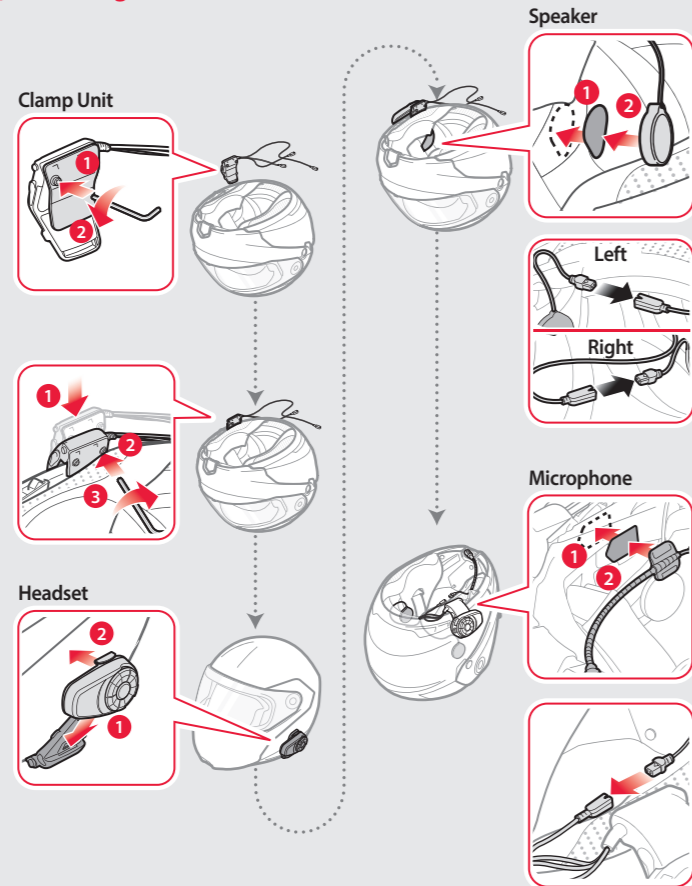


## PREPARATION

### Knowing the Headset Layout

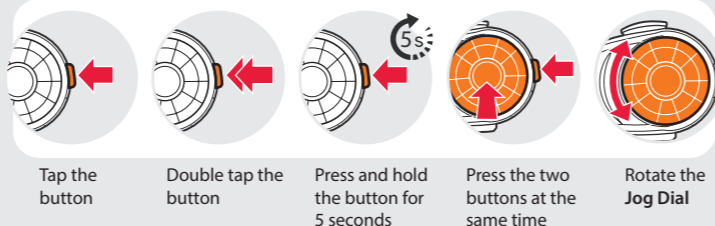


### Installing the Headset

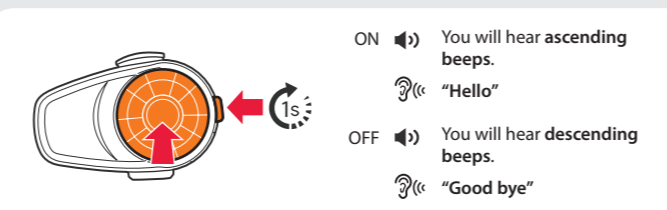


## BASIC OPERATION

### Operating the Buttons

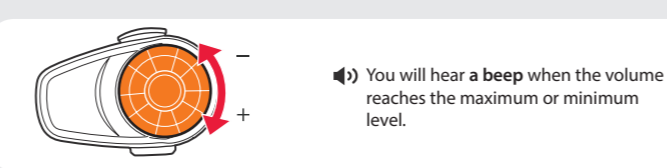


### Turning On/Off the Headset

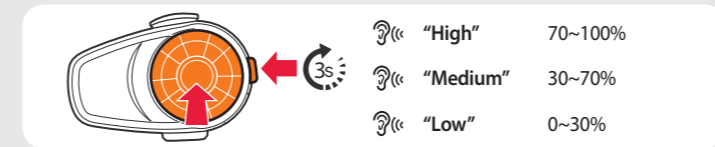
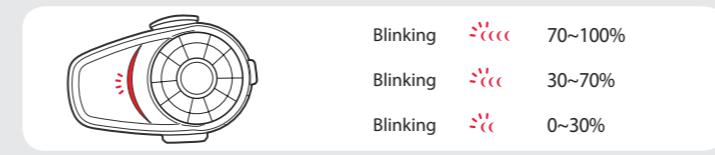


Simultaneously press and hold the Jog Dial and the Phone Button for 1 second to turn on or off the headset.

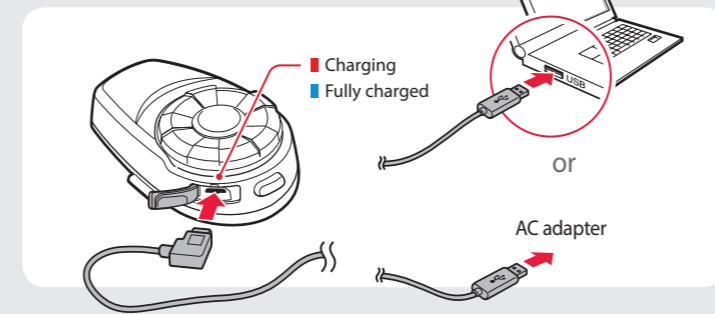
### Adjusting the Volume



### Checking the Battery Level

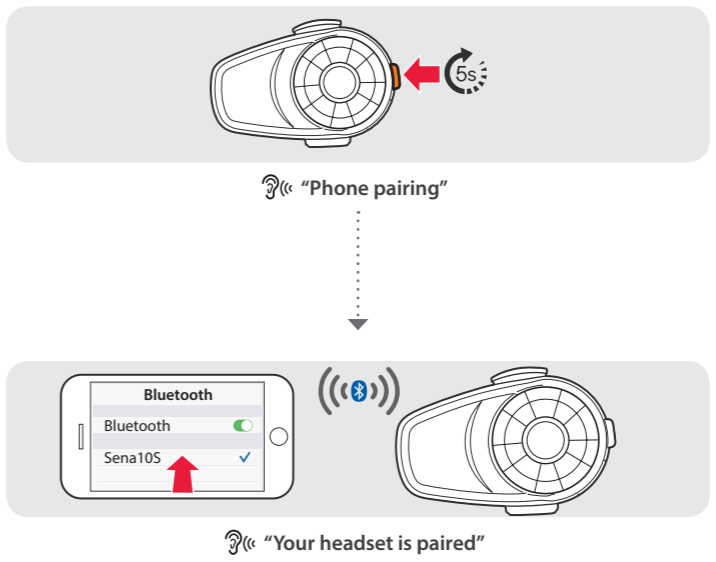


### Charging the Battery

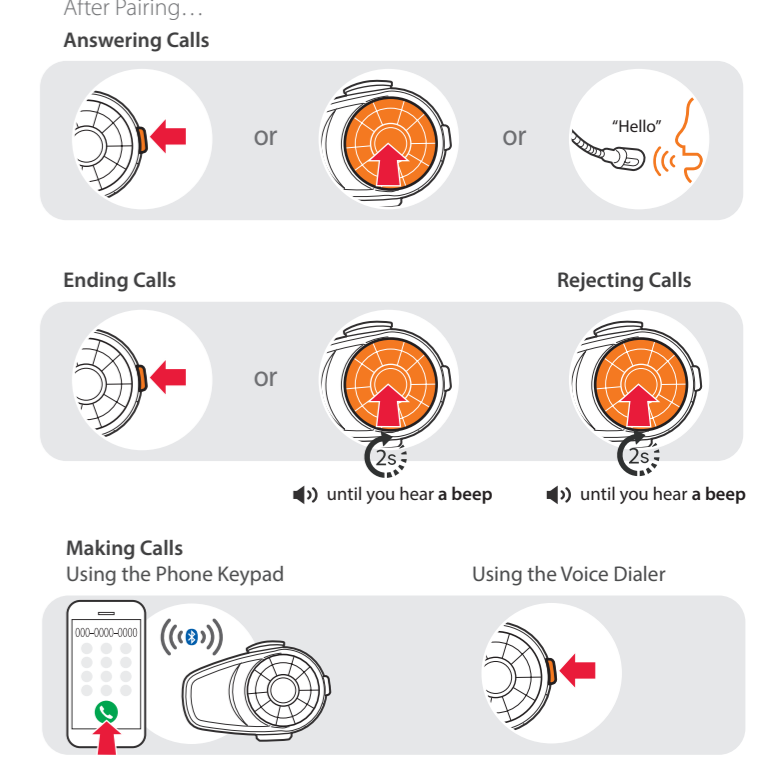


## PAIRING

### Pairing with Mobile Devices - Phone, Music



### Using Phone Features



### Using the Speed Dial



- ▶ You will hear a beep.  
 📞 "Speed dial"
- Voice Menu**
- Last number redial
  - Speed dial 1
  - Speed dial 2
  - Speed dial 3
  - Cancel

### Listening to Music

After Pairing...

▶ until you hear a double beep



▶ until you hear a double beep

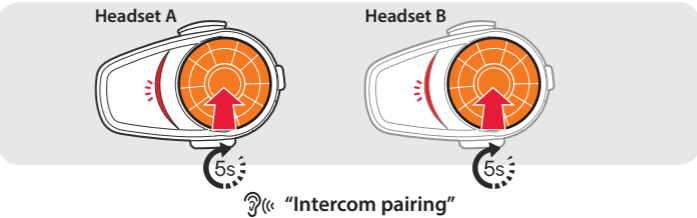


▶ until you hear a double beep

▶ until you hear a double beep

## INTERCOM

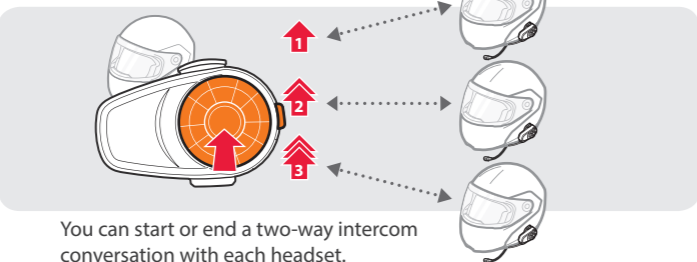
### Pairing with Other Headsets



Follow the steps above to pair with two or more headsets.

### Using the Intercom

After Pairing...



You can start or end a two-way intercom conversation with each headset.

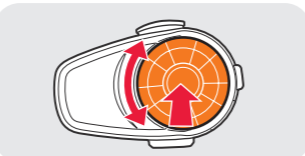
## RADIO

### Turning On/Off the FM Radio



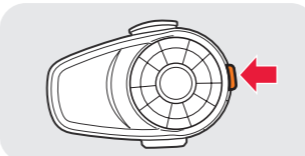
- ▶ You will hear a double beep sound.  
 📞 "FM on" or "FM off"

### Seeking Stations

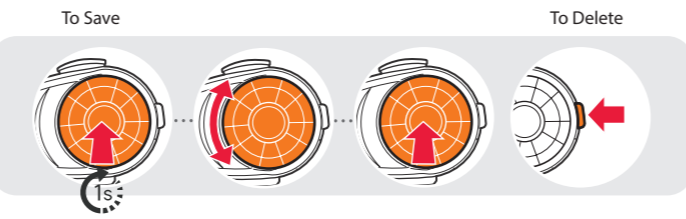


Rotate While Pressing

### Listening to Preset Stations



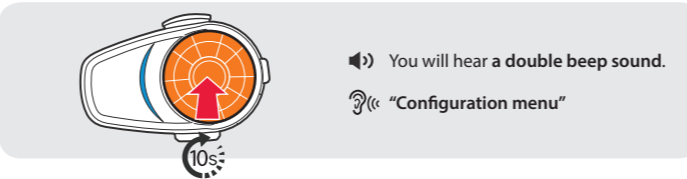
### Saving or Deleting Stations



- 📞 "Preset (#)"    📞 "(#)"    📞 "Save preset (#)"    📞 "Delete preset (#)"

## SETTING

### Method1) Using the headset



- ▶ You will hear a double beep sound.  
 📞 "Configuration menu"

### Method2) Using the Sena Device Manager

Connect the headset to your computer via a USB cable. Launch the Sena Device Manager and click **DEVICE SETTING** to configure the headset settings.

For details about downloading the Sena Device Manager, refer to the leaflet included in the package.

### Method3) Using the Sena Smartphone App

1. On your smartphone, download the Sena Smartphone App for Android or iPhone from Google Play or App Store. Refer to [www.sena.com/headset-app/](http://www.sena.com/headset-app/) for more details.
2. Pair your smartphone with the headset.
3. Run the Sena Smartphone App. Swipe the screen to the right and tap **Setting** to configure the headset settings.

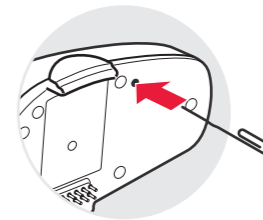
## TROUBLESHOOTING

### Factory Reset

If you want to restore the 10S to factory default settings, press and hold the **Phone Button** for 10 seconds. Tap the **Jog Dial**. The headset automatically restores the default settings and turns off.

### Fault Reset

If the 10S is not working properly for any reason, push the pin-hole reset button located on the back of the headset.



Sena Technologies, Inc.

[www.sena.com](http://www.sena.com)

Customer Support: [support@sena.com](mailto:support@sena.com)

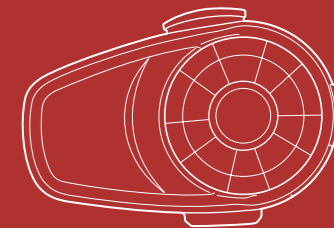
E-mail: [support@sena.com](mailto:support@sena.com)

# SENA

# 10S

## Quick Start Guide

Motorcycle Bluetooth®  
Communication System



You can download the full version of the manual and view other Sena products at the Sena website: [www.sena.com](http://www.sena.com).